

1801 Series

ZIF FPC Connector

1.00 mm Pitch, SMT Type

Ordering Information

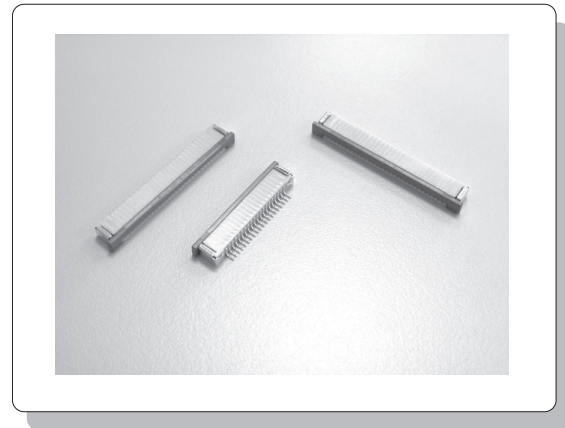
1801 - 1 XX - 0 8

Mounting Type
 1 - Surface Mount, Right Angle (Top Contact)
 2 - Surface Mount, Right Angle (Bottom Contact)

Contact Plating
 8 - 100 μ m Tin/Lead over 45 μ m Nickel

Color of Insulator
 0 - Housing, Beige Actuator, Brown

NO. of Contact
 03 - 32 positions



Specification

Materials:

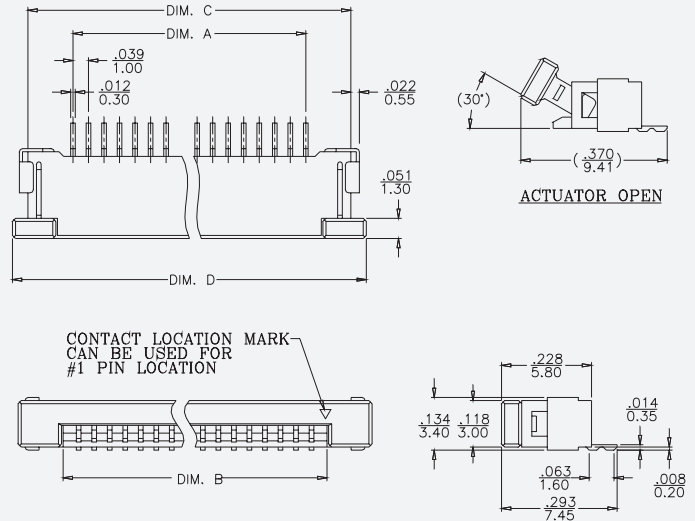
- **Housing:** Nylon.
- **Actuator:** PPS.
- **Contact:** Copper Alloy.
- **Plating:** Tin/Lead.

Electrical:

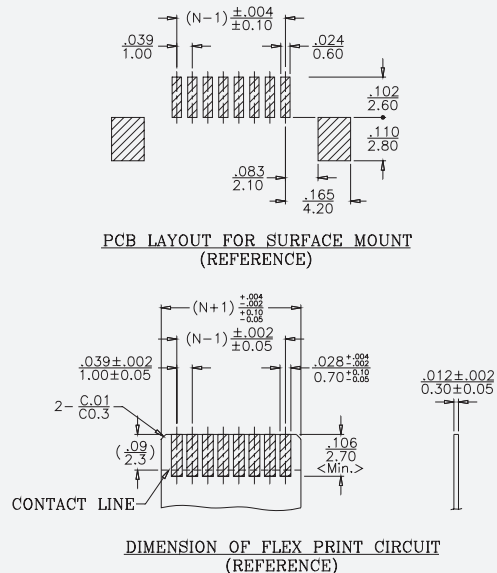
- **Insulation Resistance:** 1000 M Ω Minimum.
- **Dielectric Withstanding Voltage:** 500 VAC R.M.S.
- **Voltage Rating:** 50V. (DC/AC)
- **Current Rating:** 0.5 AMP. (DC/AC)
- **Contact Resistance:** 20 m Ω Maximum.

Temperature -20 $^{\circ}$ C ~ +85 $^{\circ}$ C

Dimension



RECOMMENDED P.C.B. LAYOUT



PRODUCT NO.	NO. OF CONTACT	DIM. A ± 0.004 ± 0.10		DIM. B ± 0.006 ± 0.15		DIM. C ± 0.006 ± 0.15		DIM. D ± 0.006 ± 0.15	
		mm	in	mm	in	mm	in	mm	in
1801-203-08	3	2.00	0.079	4.10	0.161	7.80	0.307	9.80	0.386
1801-204-08	4	3.00	0.118	5.10	0.201	8.80	0.346	10.80	0.425
1801-205-08	5	4.00	0.157	6.10	0.240	9.80	0.386	11.80	0.465
1801-206-08	6	5.00	0.197	7.10	0.280	10.80	0.425	12.80	0.504
1801-207-08	7	6.00	0.236	8.10	0.319	11.80	0.465	13.80	0.543
1801-208-08	8	7.00	0.276	9.10	0.358	12.80	0.504	14.80	0.583
1801-209-08	9	8.00	0.315	10.10	0.398	13.80	0.543	15.80	0.622
1801-210-08	10	9.00	0.354	11.10	0.437	14.80	0.583	16.80	0.661
1801-211-08	11	10.00	0.394	12.10	0.476	15.80	0.622	17.80	0.701
1801-212-08	12	11.00	0.433	13.10	0.516	16.80	0.661	18.80	0.740
1801-213-08	13	12.00	0.472	14.10	0.555	17.80	0.701	19.80	0.780
1801-214-08	14	13.00	0.512	15.10	0.594	18.80	0.740	20.80	0.819
1801-215-08	15	14.00	0.551	16.10	0.634	19.80	0.780	21.80	0.858
1801-216-08	16	15.00	0.591	17.10	0.673	20.80	0.819	22.80	0.898
1801-217-08	17	16.00	0.630	18.10	0.713	21.80	0.858	23.80	0.937
1801-218-08	18	17.00	0.669	19.10	0.752	22.80	0.898	24.80	0.976
1801-219-08	19	18.00	0.709	20.10	0.791	23.80	0.937	25.80	1.016
1801-220-08	20	19.00	0.748	21.10	0.831	24.80	0.976	26.80	1.055
1801-221-08	21	20.00	0.787	22.10	0.870	25.80	1.016	27.80	1.094
1801-222-08	22	21.00	0.827	23.10	0.909	26.80	1.055	28.80	1.134
1801-223-08	23	22.00	0.866	24.10	0.949	27.80	1.094	29.80	1.173
1801-224-08	24	23.00	0.906	25.10	0.988	28.80	1.134	30.80	1.213
1801-225-08	25	24.00	0.945	26.10	1.028	29.80	1.173	31.80	1.252
1801-226-08	26	25.00	0.984	27.10	1.067	30.80	1.213	32.80	1.291
1801-227-08	27	26.00	1.024	28.10	1.106	31.80	1.252	33.80	1.331
1801-228-08	28	27.00	1.063	29.10	1.146	32.80	1.291	34.80	1.370
1801-229-08	29	28.00	1.102	30.10	1.185	33.80	1.331	35.80	1.409
1801-230-08	30	29.00	1.142	31.10	1.224	34.80	1.370	36.80	1.449
1801-231-08	31	30.00	1.182	32.10	1.264	35.80	1.409	37.80	1.488
1801-232-08	32	31.00	1.222	33.10	1.303	36.80	1.449	38.80	1.528